



**2016 Annual Meeting: Minutes
April 3, 2016 @ 2 p.m. – Waimānalo Clubhouse**

Directors: Guy Archer (Treasurer), John Braum (Vice President), Quintin Bray, Barbara Bruno (President), Chase Norton, Laura Owens, Bob Robinson.

Absent: Chase Norton

Recording Secretary: Richard Nettell

1. Call to order @ 2:00pm
2. Reading of the minutes of 2015 Annual Meeting. Motion to approve and incorporate the minutes passed unanimously.

3. Annual reports of Officers:

President – Barbara Bruno
Accountant – Laura Owens
Treasurer – Guy Archer

4. Annual reports of Standing Committees:

Membership – Gay Conklin
Trails – Steve Brown (followed by presentation of awards for hike coordinators)
Schedule – Grant Oka
Trail Maintenance – Michael Algiers
Clubhouse – Justin Ohara
Entertainment – Hawkins Biggins
Property Maintenance – Bob Robinson

Copies of the annual reports from 3. and 4. above are attached and thereby incorporated.

The following standing committees had no reports:

Newsletter
Books and Records
Public Relations
Conservation
Investments (currently inactive)

5. Reports of Special Committees:

Endowment – Jim Yuen (read by John Braum).
A copy of the report is attached and thereby incorporated.

The following special committees had no reports:

Website – Nate Luzod

Na Ala Hele – Bill Gorst

Da Kine Kokua

6. Old Business – None

7. Unfinished business - None

8. New Business

A. Awards – President Barb Bruno recognized the Entertainment Committee and Steve Brown for outstanding service to HTMC.

B. Bylaw Changes - After a brief presentation and discussion, a motion to accept the outlined changes (which had been distributed on-line by the bylaws committee) was passed 26:3 (with 5 abstention).

9. Elections to the Board (3-year terms)

Nominations made in advance: Guy Archer, Richard Nettell

Nominations made from the floor: Udom Stamegna

All three members elected to the board by acclamation.

10. Announcements - None

11. Adjournment @ 3:07

Annual Report for Endowment Fund
(submitted March 2016 for Calendar Year 2015)

Balance as of Jan. 1, 2015 : \$10,197.64

Donations received for year 2015 : \$25.00

Balance as of Jan 1, 2016 : \$10,222.64

The committee is in the process with the authorization from the HTMC Board of Directors of creating an investment account with Vanguard Brokerage Services to invest the current assets of the Endowment Fund.

Jim Yuen
Chair, HTMC Endowment Fund

**HTMC Entertainment Committee
2015-2016 Annual Report**

Committee Chair - Hawkins Biggins

Committee Members - Roy Tanaka, Bob Tyson, Keala Dominski - the most amazing people!

21 total events:

17 Presentations

3 movie nights

1 Holiday Luau

Attendance at all events:

788 members/guests/non members

Expenses:

Presenters Lei's: \$153

Plates/cutlery/napkins: \$103.52

Holiday Luau: \$435.36

Movie Nights (popcorn & DVD's): \$51.77

Total \$743.59

Donations total from all events

\$1,177

GOAL

To create a community atmosphere where members/non-members can come together and enjoy a variety of presentations/events on a regular basis (generally every two weeks).

FEAR

Committee Members will get burnt out with the setup/ breakdown/time commitment

SOLUTION 2016-2017

1. Need to find two more committee members to give the regulars an occasional break
2. Looking into possible purchase of sound system to take the pressure off Bob Tyson

PRESENTER SIGN UP PROCESS IMPROVEMENTS

Smoother/faster process with the new EVENTS tab on the website thanks to Nate Luzod!

NEW EVENT IDEAS

Game night - coming up on May 7th

Scavenger hunt - Creative food for hikers - Yoga

Events

April 18, 2015

Presenters: Chase Norton & Hawkins Biggins

Topic: Lanai Trek

Attendance - 30+ people

Donations \$20

April 25, 2015

Presenter: Steve Haumschild

Topic: Denali

Attendance - 35 people

Donations \$53

Expenses Lei - \$9.50

May 2, 2015

Mike Nahoopii

Topic: Kaho'olawe

Attendance 20+ people

Donations \$13

Expenses Lei - \$10.47

May 16, 2015

Ryan Chang & Katie Ersbak

Topic: Thoughtful Hiking

Attendance 20+ people

Donations \$12

Expenses Lei (2) - \$ 21.98

June 6, 2015

Owen Martel

Topic: Walk the West

Attendance - 23 people

Donations - \$13

Expenses - Lei \$8 & Supplies: Plates, Forks, Cups via Costco \$41.64 - total \$48.64

August 1, 2015

Event: First HTMC Movie Night

film: The Way

people attended: 15

Donations: \$3

Expenses:

\$5.21 Popcorn Kernels

\$6.64 Buckets & Popcorn bags (brough personal air popcorn machine)

August 15, 2015

Presenter Susan Scott

Topic: Call Me Captain

People Attended: 60

Donations: \$63

Expense: Lei \$10

August 29th, 2015

Presenter: Nate Yuen

Topic: Amazing images and information about Native Plants and Insects in Hawaii

Attendance: 60+ people

Donation: \$37

Expenses - M.P Lei Shop \$10

September 12, 2015

Presenter: Alex Colby

Topic: Incredible images and videos of paragliding around Oahu

Attendance: 40+ people

Donation: \$18

Expenses - M.P Lei Shop \$10

October 10, 2015

Presenter: Chase Norton

Topic: Summiting Mt. Waialeale on Kauai

Attendance: 40+ people

Donations: \$32

Expenses: \$10.45 - Lei for presenter

October 24, 2015

Presenter: Bob Liljestrang

Topic: Molokai Solo - documentary on Audrey Sutherland Kayaking North Coast of Molokai

Attendance: 75+ people

Donations: \$54

Expenses: \$15.71 - Lei for presenter

November 7, 2015

Presenter: Peter T Young

Topic: History of Hawaii's Trails & general development of the land

Attendance: 27+ people

Donations: \$13

Expenses: \$10 - Lei for presenter

November 21, 2015

Presentation: Taylor Camp Documentary

Topic: Living on Kauai's coast in the 1960's

Attendance: 38+

Donation: \$21

Expenses - Supply replenish: plates & bowls for potluck events \$23.69

December 5, 2015

Presenter: John Wythe White

Topic: A High and Beautiful Wave written by John Wythe White

Attendance: 28

Donation: \$6

Expenses \$10 lei for presenter

December 19, 2015

Event: HTMC Holiday Luau

Topic: Reviving a historic tradition at the HTMC Clubhouse

Attendance: 80

Donation: \$34

Expenses: \$435.46 (please double check \$ with Guy Archer as he wrote the checks)

January 16, 2016

Presenter: Linny Morris

Topic: Trek Salkantay six-day Mountain Lodges of Peru & Machu Pichu

Attendance: 35

Donation: \$36

Expenses: \$8

January 30, 2016

Presenter: Bob Liljestrand

Topic: Icebreaker: Impressions of The Russian Arctic – A Film

Attendance: 35

Donation: \$36

Expenses - Costco Lei \$8.89

February 13, 2016

Presenter: Chase Norton

Topic: Death Valley: Chase's Way

Attendance: 35

Donation: \$37

Expenses - M.P Lei Shop \$10

February 27, 2016 - Mahalo to Thea Ferentinos and Justin Ohara who led this event

Movie Night: WILD

Topic: Personal story of hiking the PCT

Attendance: 15

Donation: \$0

Expenses: \$0

March 10, 2016

Presenter: Katie Ersbak

Topic: Faroe Islands: The Land of Maybe

Attendance: 52

Donation: \$67

Expenses: M.P Lei Shop \$10

Supplies: Plates, Forks, Napkins (Costco) \$38.19

March 26, 2016

Presenter: Debra Halbert

Topic: North Pole Skiing

Attendance: 25

Donation: \$15

Expenses: M.P Lei Shop \$10

HTMC Annual Membership Committee Report for

2015

Total members 525

Breakdown by membership type:

Regular 511

Associate 14

Breakdown by dues type:

Yearly 301

Add'l Family Member 60

Lifetime 164

Deceased members:

Nigel Robertson

Clyde Noble

New Lifetime members:

Christine Lanning

Monique Yenamandra

Total new members 56

8:37 PM
04/01/16
Cash Basis

Hawaiian Trail and Mountain Club Inc

Operating Income and Expense

January through December 2015

	<u>Jan - Dec 15</u>
Ordinary Income/Expense	
Income	
Membership Dues	8,093.25
Donations	2,717.22
Restricted Contributions	0.00
Resident Manager's Rent	1,010.00
Clubhouse Use Fees	5,693.80
Hiking Fee	1,824.00
Interest	3.96
Patches	6.00
Other Income	50.00
Total Income	<u>19,398.23</u>
Gross Profit	19,398.23
Expense	
Office Equipment	220.00
Promotional Items	4.57
Office Supplies	39.00
Meetings	923.91
General Excise Tax	483.30
Clubhouse Maintenance/Supplies	1,669.90
Property Tax	300.00
Clubhouse Utilities	2,211.43
Insurance	4,787.02
Printing/Mailing	1,857.74
Professional Fees	1,256.54
Trail Maintenance	2,559.13
Miscellaneous Expenses	337.38
Total Expense	<u>16,649.92</u>
Net Ordinary Income	<u>2,748.31</u>
Net Income	<u><u>2,748.31</u></u>

Presidents' Report for 2016 Annual Meeting

A lot was accomplished over the past year. Here are some highlights:

- 1) HTMC has been supporting the efforts of the Trust for Public Land in their effort to purchase ~3,000 acres in the Helemano area of Central O'ahu.
- 2) We were approached by the City and County of Honolulu Department of Planning and Permitting (DPP). DPP asked us to provide comments on access issues or any other concerns that the club may have regarding the East Honolulu Sustainable Communities Plan. Thanks to Grant Oka for providing comments on behalf of HTMC.
- 3) The website is continually being expanded & improved. Thanks Nate Luzod!
- 4) HTMC established a reciprocity agreement with Auckland Transport Club (ATC) in New Zealand. They own a bus, hut & ski lodge, and we are now eligible to use these facilities at member's rates. Similarly, they can use our clubhouse. They are arriving on May 21, giving a slideshow that evening, and going on the club hike on May 22. Thanks to Jeanne Furukawa!
- 5) Impressive array of entertainment offerings (21!), including a holiday luau. (see Entertainment report)
- 6) We gratefully acknowledge donations to improve the clubhouse, including picnic tables (Ralph Valentino), buggy boards (Pat Rooney), upstairs projection screen (John Braum), and LCD projector (Guy Archer).
- 7) The trail-clearers continue to do a stellar job each Sunday maintaining hiking trails. They maintained 50 trails this past year, and their efforts were rewarded by a \$1000 donation made by Randy Ching. (see Trail Maintenance report)
- 8) We don't just receive donations; we also donate. This year, we donated our leftover flooring (from the upstairs renovation) to Youth Outreach House in Waikiki. Thanks Reese Liggett for installing it.
- 9) Thanks to the Schedules & Trail committees and all of the hike coordinators, HTMC coordinated 79 hikes last year. Trail access continues to be an issue (see Trails report)
- 10) We established an HTMC code of conduct (On the bottom-right hand corner of the home page, click "About"). Thanks Richard Nettell, John Braum, Larry Lee for helping draft it.
- 11) HTMC is in the black, with income exceeding expenses for calendar year 2015. Total income was about \$19,400 and expenses were under \$16,700, yielding a net profit of over \$2,700. Thanks Laura & Guy for compiling this report (See accountants report for details)
- 12) Finally, we now have a "how-to-guide" to being President of HTMC. My term as president ends this month, so I created this guide so the next President knows what to do. This is intended as a living document, and I encourage past presidents to review it and let us know what needs to be added.

The committee members are Barb Bruno, Grant Oka, Jim Yuen, Joyce Oka, Mike Algiers, Myra Dombrowski, Steve Brown, and Stuart Ball.

As reported last year, the committee applied to the post office for a permit to mail at non-profit rates. This application was denied, since the Club does not qualify under any allowed organizational category.

We have been using Reskyu Printing for the printing and mailing of the schedule and newsletter. There have been some issues, but generally we are pleased with their service.

The committee continues to discuss the possibility of going paperless. Printing and mailing the schedule are very costly for the Club. Recent costs are shown at the bottom of this report. The total cost for the recent 4 quarters (annual cost) is \$2,850. There are many options and many ideas regarding how many of which format, and to what recipients these should go. An important question is, "What purpose does the printed schedule serve?" For now, the committee has included the following note on the 2nd quarter printed schedule

We're considering doing away with the printed schedule. Visit the website (Newsletter Signup at the bottom of the home page) to receive an electronic copy.

The committee appreciates the work of Nate Luzod and Jim Yuen on the electronic versions of the schedule.

We have implemented the change to "No meeting at the palace for hikes". This has received mostly positive responses.

Meeting places are no longer listed on the printed schedule. Hikers must visit the website if they don't know where to meet. The committee is developing a list of meeting places, and the quarterly list is forwarded to the webmaster.

Barb has asked the coordinators to review the website write-ups for their hikes to insure accuracy.

HTMC Schedule & Newsletter Printing & Mailing Costs

	Print <u>Sked</u>	Print <u>Nwslt</u>	Print <u>Other</u>	Mail <u>All</u>	Mail <u>Sked</u>	<u>Cost</u>	<u>Printer</u>	<u>Notes</u>
4Q14	870	380	0	365	57	\$498	Arrow	
1Q15	900	394	0	379	57	\$360	Arrow	
2Q15	556	369	369	354	56	\$790	Reskyu	renewal insert
3Q15	556	0	0	377	56	\$513	Reskyu	
4Q15	588	402	0	387	56	\$750	Reskyu	
1Q16	593	412	0	397	56	\$797	Reskyu	

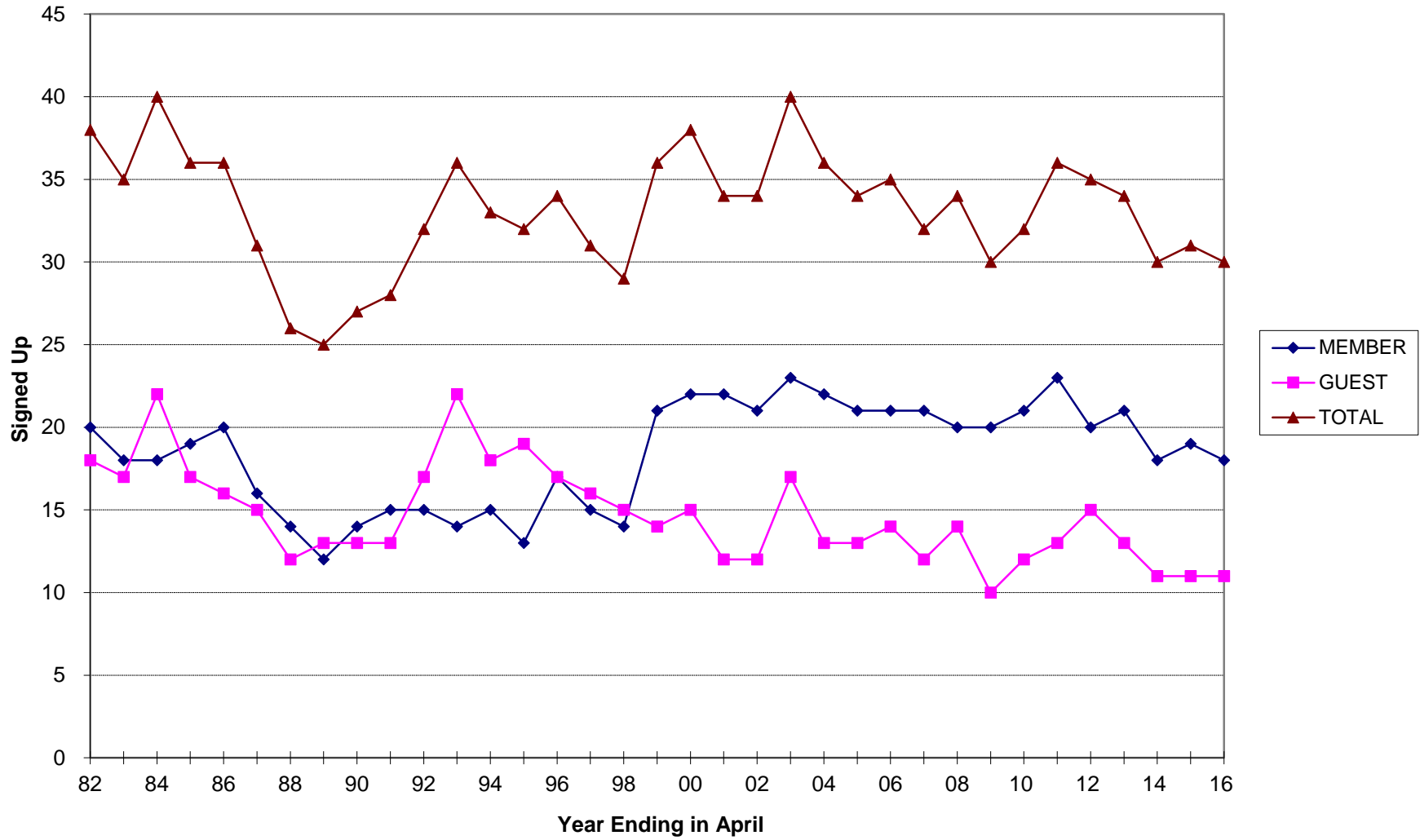
Trail Maintenance Annual Report 2015 to 2016

Since the last Annual meeting, the Trail Maintenance crew cleared 50 trails, and the average participation was 22 volunteers. Our expenses consisted of gas/oil/string, for our three weed whackers machines, as well as their occasional repair, and numerous rolls of pink trail ribbon, to keep you from getting lost on the trails. We received a very generous donation of \$1000, which helped to offset some of our other expenses, and we used a portion of it to subsidize the printing of "Trail Crew" tee shirts & patches. These items were to reward our regular volunteers, and to recruit new ones. You're all welcome to join us any Sunday !

Mike Algiers, Trail Maintenance Chair

2015 Trails cleared		Participants	2016 Trails cleared		Participamts
April	19 Waianae Ramble	13	Jan 03	Godek Jaskulski	26
	26 Manoa Middle	15	10	Mt Olympus	24
May	03 Kahana Valley	22	17	Waianae water walls	20
	10 Schofield Waikane	27	24	Wailupe Loop	28
	17 Kaau Crater	23	30	Palehua	8
	31 Kawaiiloa Ridge	21	31	Peacock flats	26
June	07 Kamanaiki	28	Feb 07	Keaau Ridge	18
	14 Moanalua Bridge 1	22	14	Malaekahana pools	26
	21 Kahana Saddle	24	21	Kawaewae	23
	28 Pauao Ridge	24	28	Konahuanui	26
July	05 Pauoa Woods	23	Mar 06	Kaipapau Makai	28
	12 Puu O Kona	17	13	Kawaiiloa	21
	19 Lanipo	30	20	Lanipo	26
	26 Wahiawa -Poamoho	27	27	Manoa Middle	--
Aug	02 Kawaewae	18			
	09 Waimalu Ditch	20			
	16 Kalauao	13			
	23 Kawainui	24			
	30 Kahana Ditch	19			
Sept	06 Lanihuli	24			
	13 Iliahi Ridge	17			
	20 Laie	20			
	27 Hauula Papali	21			
Oct	04 Hauula Uka	18			
	11 Kulepeamo	21			
	18 Waianae water works	20			
	25 Puu O kila	18			
Nov	01 Aiea Ridge	26			
	08 Keahiakahoe	21			
	15 Waiau	25			
	22 Kawaiiki	16			
	29 Pupukea Summit	19			
Dec	06 Waimanu	26			
	13 Bowman	17			
	20 Kahikili	14			
	27 Wahiawa Hills	20			

HAWAIIAN TRAIL & MOUNTAIN CLUB Average Hike Attendance



Hawaiian Trail & Mountain Club

Trails Committee Report

Annual Meeting, April 3, 2016

The Trails Committee members are Stuart Ball, Mike Algiers, Fred Boll, and Steve Brown.

During the period since the last annual meeting, the Club conducted 79 hikes, the same as the previous period. There were 49 Sunday hikes, 29 Saturday hikes, and 24 members-only hikes. One hike was cancelled due to the lack of a coordinator. The percentage of members-only hikes was 30%, down from 37% last year. The hikes were attended by an average of 30 people, 18 of whom were members. The actual attendance is perhaps 10% greater, due to some participants not signing up. The average for non-members is based on hikes open to the public. See the attached graph for average attendance figures since 1982.

John Braum led an Oahu campout at Mokuleia with 8 participants.

We are pleased to have added two new hikes – Wahiawa-Poamoho and Moanalua Bridge One.

There is no new information on Halapepe Nui. The ownership of the land is still unsettled.

Steve and Mike Algiers attended a meeting arranged by Randy Ching, which included a number of Sierra Club participants, to discuss providing information to Suzanne Case, chair of DLNR regarding concerns of access to trails. Following the meeting there was some discussion among the members of the trails committee, and a decision was made not to participate with this group, since it was feared that their approach might undermine the access progress that we had already made.

There are quite a number of new “No Trespassing” signs that have appeared. There are some in the parking area for Olomana, some on Kawaewae, some on Kamaileunu, and others. We will have to decide how to address these on an individual basis.

Patrick Rorie has been monitoring the increasing number of fences that have been put in place and their effect on the trails that we hike. He has been interacting with the organizations involved, and keeping the board apprised of the situation.

We had to substitute a different hike for Kaluanui Ridge (Mariner’s Ridge) which was scheduled in December, due to the postponement of access to the trail by Kamehameha Schools. There have been problems with runoff, both onto the street and onto residents’ properties.

There has been much discussion at Kamehameha Schools following the death of the hiker who was trespassing on KS lands on the Koolau crest above Sea Life Park. This has forestalled for the time being any discussion about the possibility of regaining access to

Hawaiian Trail & Mountain Club

Trails Committee Report

Annual Meeting, April 3, 2016

Castle Trail. The time is not right to consider any new access beyond what is currently allowed.

All of our written agreements with Kamehameha Schools include the stipulation that hikers will not post, print or publish any text, photos, videos or other information about the trail, except for the Club's normal means of communicating upcoming activities. Any communication will not describe how to access the trail nor encourage people to go on the trail. Any violation of this stipulation is grounds for termination of the ROE.

Steve received an email from the land manager at Kamehameha Schools in response to his request to confirm that the dates for the Kawailoa TM & hike were OK. The land manager asked Steve to call him in response to some internet and social media postings that they had seen. Specifically, there is one internet posting that mentions HTMC, and is a travelogue with pictures of the author's hike with us on the Kawaiiki hike. It includes distances and directions.

This posting is in direct violation of the terms of our ROE with KS. Steve had a phone conversation with the land manager, and he asked Steve to forward to him by Monday Feb 29 our plan on how to curb this specific posting, and well as other such postings.

This issue was discussed with Barb and Mike. Mike provided some good information about the site and the issue, and Barb requested that the poster remove the posting, explaining the situation. The posting was removed.

There was quite a bit of further communication with KS. The fact that we were able to get the posting removed, and that we would be appointing an internet and social media watchdog to constantly search for and address such violations, and that we intend to be diligent about informing all participants not to post, resulted in KS agreeing to allow us to do Kawailoa, but it was a close call.

KS will be rewriting the ROE for the Kawailoa area to include additional stipulations.

We appreciate Quinton Bray's willingness to be our watchdog.

We continue to foster good relations with organizations and individuals who grant us permission to hike on their lands. These include the Army, Kamehameha Schools, Na Ala Hele, State Division of Forestry and Wildlife, and State Natural Area Reserves System, among others.

The access issue for a certain trail may be sensitive and complex and may change from year to year. The fact that we are hiking on a particular trail should not be construed as an indication that the Club has formal permission to hike there.

Hawaiian Trail & Mountain Club

Trails Committee Report

Annual Meeting, April 3, 2016

The trail maintenance crew continues to do an awesome amount of work to facilitate our hikes. Mahalo nui loa to them.

A big mahalo to the hike and campout coordinators, who willingly donate so much time and energy to allow us to enjoy the wilderness of Oahu. Thanks also to the many assistants who help the coordinators. Their assistance is critical to our success, as well.

We are pleased to welcome new coordinators Quintin Bray and Rich Bailey.

The reports submitted by the coordinators following the hikes they lead provide valuable information on the condition of the trails, considerations specific to that hike, and information for scheduling future hikes.

The following have been our hike and campout coordinators during the period since the last annual meeting: Arnold Fujioka; Barb Bruno; Darrell Teruya; Dayle Turner; Dusty Klein; Fred Boll; Grant Oka; Jacque Turner; John Braum; John Hall; Justin Ohara; Karen Liliker; Ken Suzuki; Larry Lee; Laura Owens; Mike Algiers; Nathan Yuen; Peter Kempf; Quintin Bray; Ralph Valentino; Rich Bailey; Ron Miller; Steve Davis; Steve Rohrmayr; Stuart Ball; Thea Ferentinos; Udom Stamegna; Wil Kawano.

HTMC Expenditures – From January 2015 through December 2015

Clubhouse Improvements

1837	Bob Robinson	1,700.00	Countertop installation	01/23/15
1876	Thea Ferentinos	<u>220.00</u>	Clubhouse furniture	09/05/15
		1,920.00		

Insurance

1833	First Fire & Casualty	1,820.00	Property insurance	01/10/15
1840	Pachner & Associates	1,739.52	Liability insurance	01/28/15
1843	John H. Connors Insurance	<u>1,115.00</u>	Officers/directors liability	02/09/15
		4,674.52		

Newsletter & Mailing

1841	Arrow Mailing Service	359.73	Newsletter & schedule	02/09/15
1848	Steve Brown	790.31	Reskyu printing #25090	04/13/15
1864	Reskyu	513.20	Newsletter & schedule	07/01/15
1881	Reskyu	<u>749.61</u>	Newsletter & schedule	10/04/15
		2,412.85		

T-Shirts

1829	Charlotte Yamane	35.00	T-shirt refund	01/08/15
1836	Jennie Chadbourne	100.00	T-shirt reimbursement	01/21/15
1847	Jennie Chadbourne	<u>457.37</u>	T-shirt printing, postage	03/18/15
		592.37		

Trail Maintenance

1838	Thomas Yoza	175.87	Gasoline, cable, line	01/23/15
1839	Ken Suzuki	758.68	Weed whacker expense	01/26/15
1852	Gordon Muschek	806.46	Weed whacker Jan and Feb	05/20/15
1862	Mike Algiers	150.00	Trail clearing (donation)	06/24/15
1880	Ken Suzuki	560.33	Weed whacker expense	09/27/15
1886	Gordon Muschek	84.23	Weedwhacker supplies	10/23/15
1889	Mike Algiers	<u>23.56</u>	Roll taffeta for flagging	12/04/15
		2,559.13		

Clubhouse Expenses

1855	American Hiking Society	15.00	Membership dues	05/20/15
1856	Mike Algiers	53.89	Clubhouse supplies	05/20/15
1859	Primetta Dominski	100.00	Clubhouse supplies	06/17/15
1860	Primetta Dominski	51.34	Clubhouse supplies	06/24/15
1863	Mike Algiers	306.77	Club patches (\$252)	06/24/15
1868	Mike Algiers	186.15	Electronic lock, materials	07/17/15
1869	American Hiking Society	62.50	Membership dues	07/17/15
1871	Michael Medus Starfarms	921.47	Tree trimming	08/15/15
1874	Primetta Dominski	96.65	Clubhouse supplies	08/19/15
1879	Primetta Dominski	87.88	Clubhouse supplies	09/16/15
1882	Alaina Fukui	39.20	Postage stamps	10/12/15
1893	Primetta Dominski	98.74	Clubhouse \$52.04 Luau \$46.70	12/16/15
1894	Jean Tsukamoto	<u>65.91</u>	Maintenance lunches	12/17/15
		2,085.50		

Professional Fees

1850	Alison Nelson, CPA	1,256.54	Annual audit & Quickbooks	05/12/15
------	--------------------	-----------------	---------------------------	----------

Entertainment Expenses

1844	Hawkins Biggins	88.34	Projector rental & lei	02/21/15
1853	Hawkins Biggins	10.46	Entertainment lei	04/15/15
1854	Hawkins Biggins	17.32	Mini display port; lei	04/16/15
1858	Hawkins Biggins	42.99	Presentation expenses	06/08/15
1861	Hawkins Biggins	49.64	Entertainment expense	06/24/15
1873	Hawkins Biggins	21.85	Entertainment expense	08/19/15
1877	Hawkins Biggins	20.00	Entertainment - 2 lei	09/14/15
1878	Steve Brown	200.00	Appreciation dinner (pizza)	09/16/15
1884	Hawkins Biggins	10.45	Entertainment – 1 lei	10/14/15
1885	Steve Brown	26.65	Appreciation dinner (pizza)	10/21/15
1888	Hawkins Biggins	53.66	Film rental and lei	11/16/15
1892	Hawkins Biggins	33.69	Holiday party supplies	12/15/15
1895	Bernard Kalua	200.00	Musician/Luau music	12/18/15
1896	Hawkins Biggins	72.88	Holiday luau expenses	12/22/15
1897	Margaret Lefton	<u>29.28</u>	Poinsettias for luau	12/22/15
		877.21		

Internet Communications

1831	Oceanic Time Warner	37.68	Internet & modem	01/10/15
1842	Oceanic Time Warner	37.68	Internet & modem	02/09/15
1845	Oceanic Time Warner	37.68	Internet & modem	03/14/15
1849	Oceanic Time Warner	37.68	Internet & modem	04/19/15
1851	Oceanic Time Warner	75.36	Internet for May and June	05/12/15
1866	Oceanic Time Warner	37.68	Internet & modem	07/11/15
1872	Oceanic Time Warner	37.68	Internet & modem	08/15/15
1876	Oceanic Time Warner	37.68	Internet & modem	09/12/15
1883	Oceanic Time Warner	39.78	Internet & modem	10/13/15
1887	Oceanic Time Warner	39.78	Internet & modem	11/12/15
1890	Oceanic Time Warner	<u>39.78</u>	Internet & modem	12/12/15
		458.46		

Taxes & Fees

1832	Laura Owens	192.00	P. O. Box 2238 rental	01/10/15
1835	Hawaii Tax Collector	313.92	Semi-annual GET	01/20/15
1865	Guy Archer	3.50	DCCA Annual Registration	07/09/15
1867	Hawaii Tax Collector	169.38	Semi-annual GET	07/12/15
1870	City & County Honolulu	300.00	Annual Real Property Tax	08/15/15
1891	U. S. Postal Service	<u>196.00</u>	P. O. Box 2238 rental	12/12/15
		1,174.80		

HTMC Endowment Fund

Donations

1857 VOID 06/15